

# Introduction on Lake Kerkini and management issues of the National Park

**Chryssanthi Intzidou**  
Lake Kerkini Management Authority













# INTERNATIONAL CONVENTIONS

## E.U. DIRECTIVES

- ✓ Ramsar Convention.
- ✓ Bonn Convention
- ✓ Bern Convention
  
- ✓ Birds Directive (79/409/EOK).
- ✓ Habitats Directive (92/43/EOK).
- ✓ “Water” Directive (2000/60/EK)



## Seasonal changes (winter-spring)

- Altitude: 31-36 m (30,60-36,40 m)
- Area: 5.000-7.300 ha
- Maximum water depth: 5-10 m
- Mean water depth: 3-6 m

# BIODIVERSITY

Chlorophyta – Χλωροφύκη	1
Ascomycota – Λειχήνες	40
Bryophytes – Βρύα	36
Fungi – Μύκητες	122
Spermatophyta – Σπερματοφύτα	1150
Amoebozoa – Αμοιβάδες	1
Arachnida – Αράχνες	37
Myriapoda - Μυριάποδα	22
Crustacea - Καρκινοειδή	22
Insecta - Έντομα	4636
Entognatha - Εντόγναθα	37
Hirudinea - Βδέλλες	2
Mollusca - Μαλάκια	15
Osteichthyes - Ψάρια	33
Aves - Πουλιά	312
Amphibia - Αμφίβια	11
Reptilia - Ερπετά	27
Mammalia - Θηλαστικά	44
<b>New species for the science (insects)</b>	<b>46</b>
<b>TOTAL TAXA</b>	<b>6548</b>





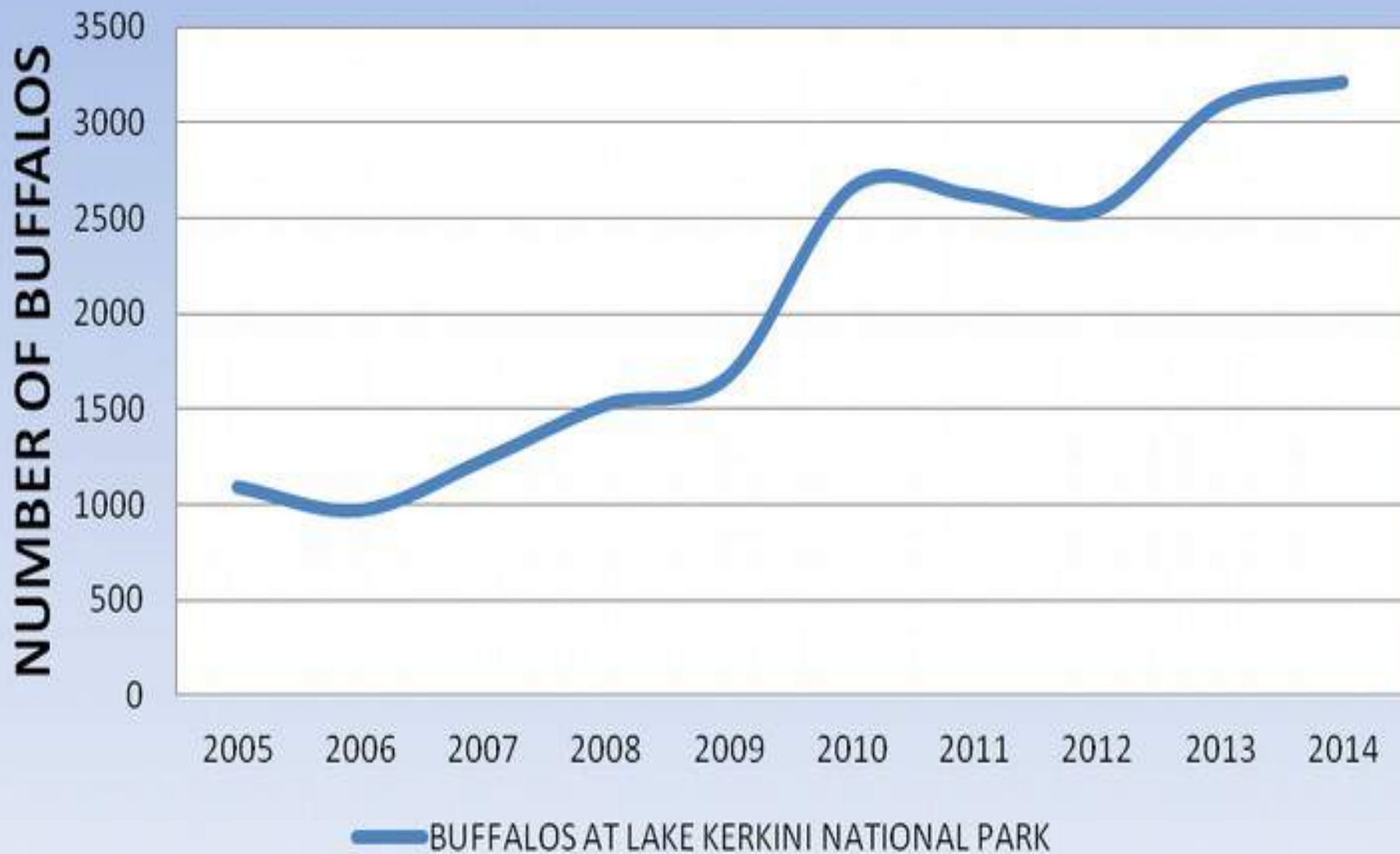








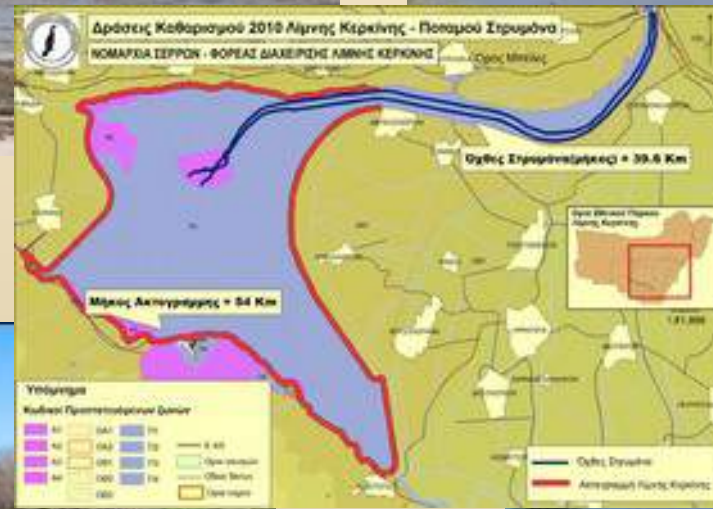
# BUFFALOS / YEAR





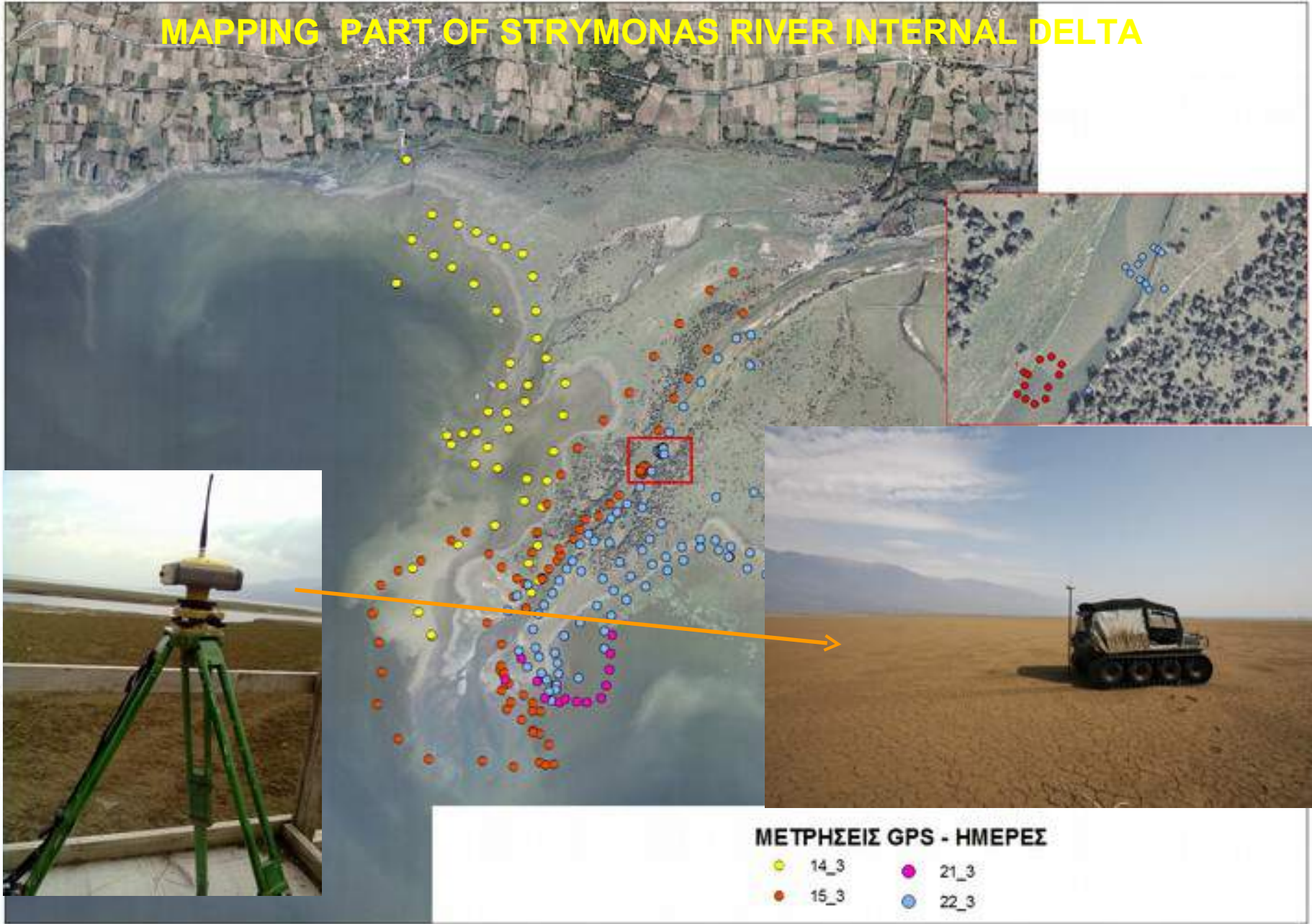
# Illegal fishing and hunting







# MAPPING PART OF STRYMONAS RIVER INTERNAL DELTA

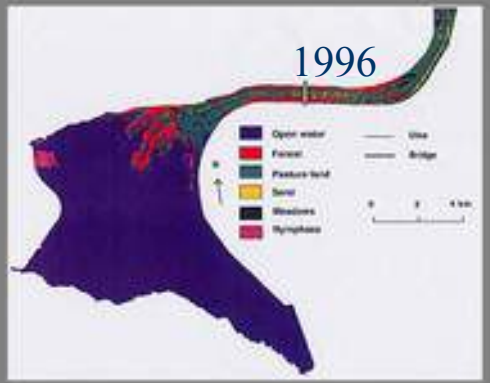
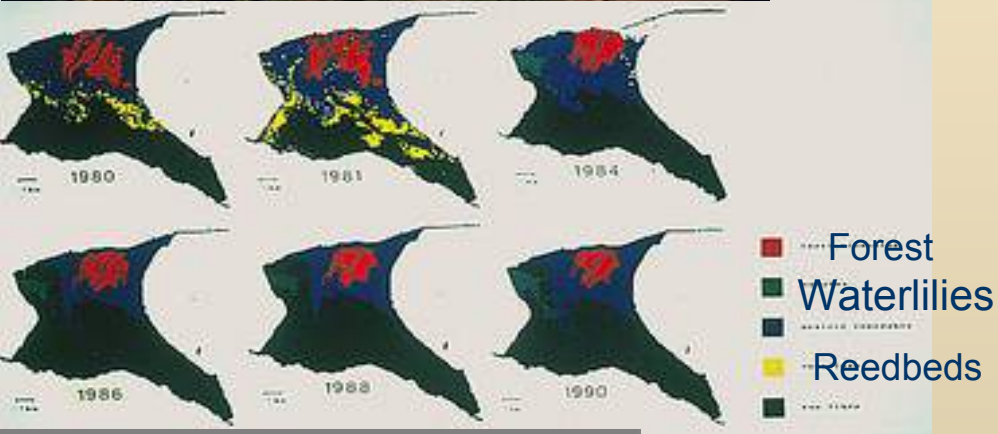






# Tern raft 2010







1987 Autumn



1985 Spring



2003 Spring



2002 July



## Pelican platforms Winter 2009-2010



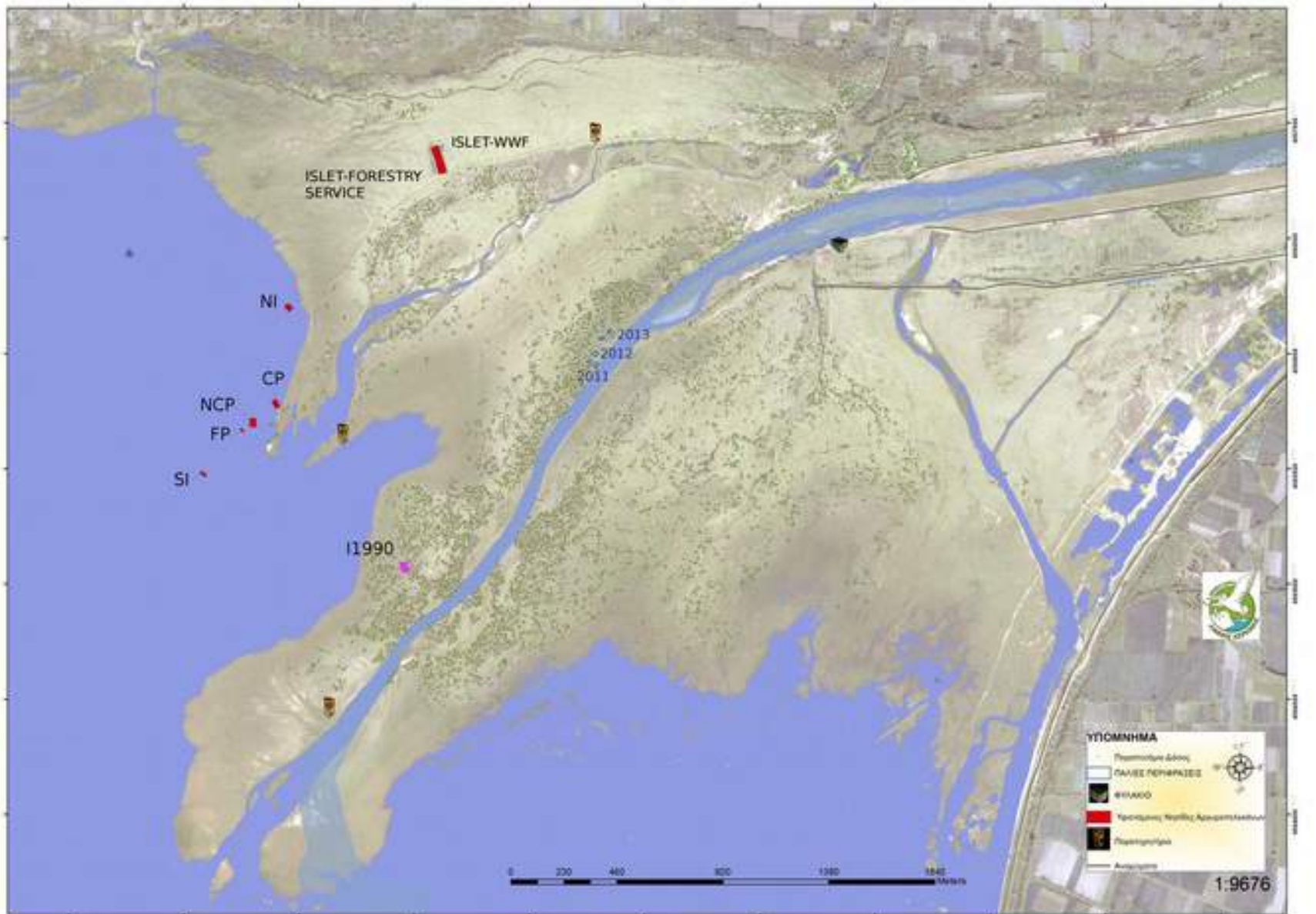
















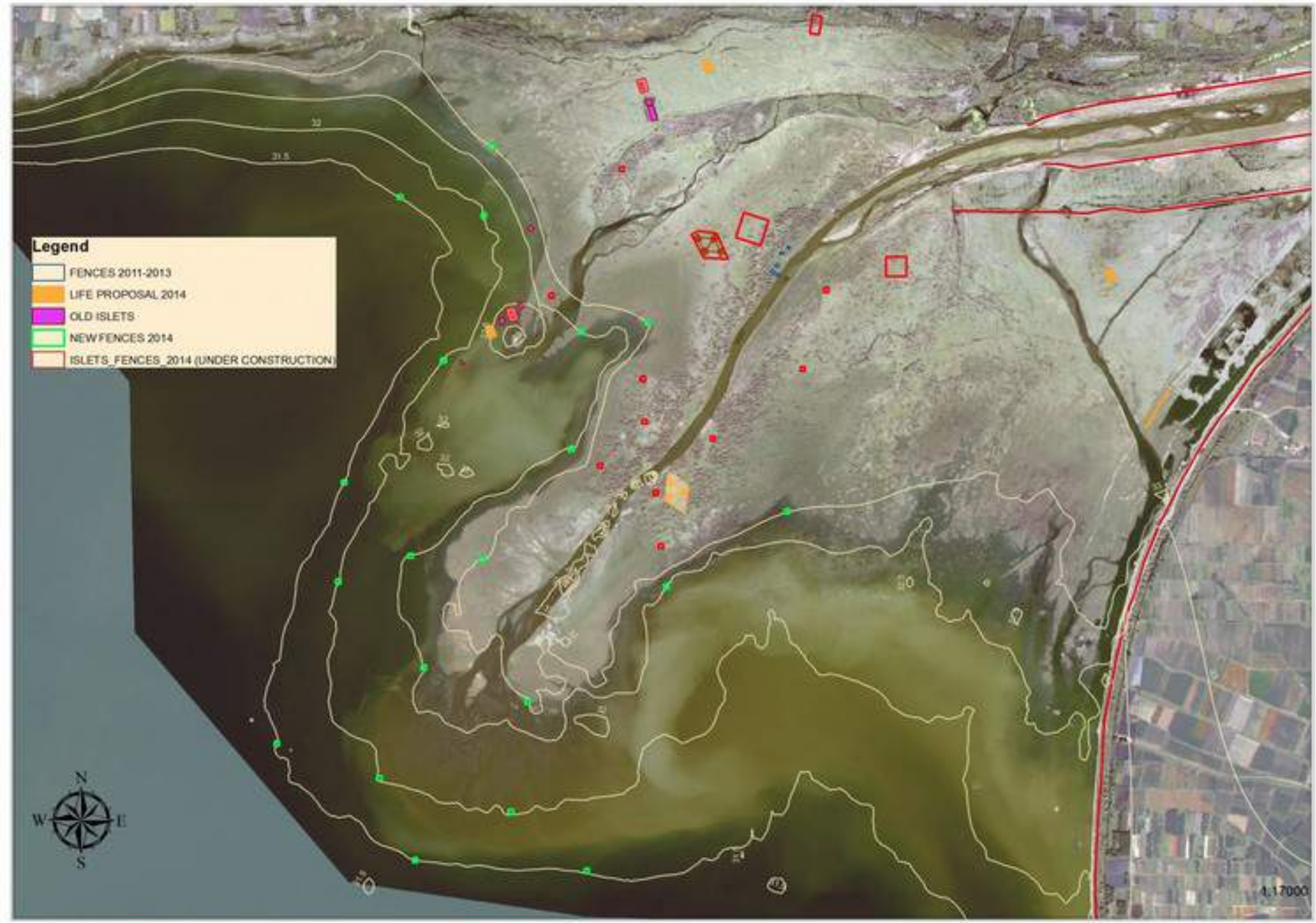






**Legend**

- FENCES 2011-2013
- LIFE PROPOSAL 2014
- OLD ISLETS
- NEW FENCES 2014
- ISLETS, FENCES, 2014 (UNDER CONSTRUCTION)







2014  
More than 150 pairs  
More than 200 chicks

