



# Steunpunt Levend Erfgoed (SLE) or “Focal Point for Living Heritage”

- ❑ Belgian NGO for rare breeds of farm animals
- ❑ “Incooperated” in 1993 – [www.sle.be](http://www.sle.be)
- ❑ Working groups for local breeds of horses, cattle, sheep and goats, rabbits and poultry, dogs.
- ❑ Designated by the Government as a breeding organisation
  - ❑ for old breeds of sheep and goats
  - ❑ For poultry, turkeys and waterfowl
- ❑ SLE Organised flock books for old breeds of sheep and goat and for the Kempens cattle



# Steunpunt Levend Erfgoed (SLE) or “Focal Point for Living Heritage”

- ❑ In charge of payment of European subsidies to holders of rare breeds (together with Ministry of Agriculture)
- ❑ Member of SAVE (1997)–participated at the ELBARN project
- ❑ Have about 1200 members
- ❑ Publish a quarterly magazine “De ARK”
- ❑ and different booklets on species of rare breeds
- ❑ SLE set up in 2001 the Living Heritage Park in the Provincial domain Puyenbroeck in Wachtebeke (Province of East Flanders)



# Steunpunt Levend Erfgoed (SLE) or “Focal Point for Living Heritage”

- ❑ Organize annual Living Heritage Expo (In 2016: 20th Living Heritage Expo (in 21 years – interrupted in 2001 because of FMD) – honoured by the presence of the Ministre of Agriculture
- ❑ SLE participates regularly at agricultural shows
- ❑ All work done by volunteers
- ❑ One part time secretary

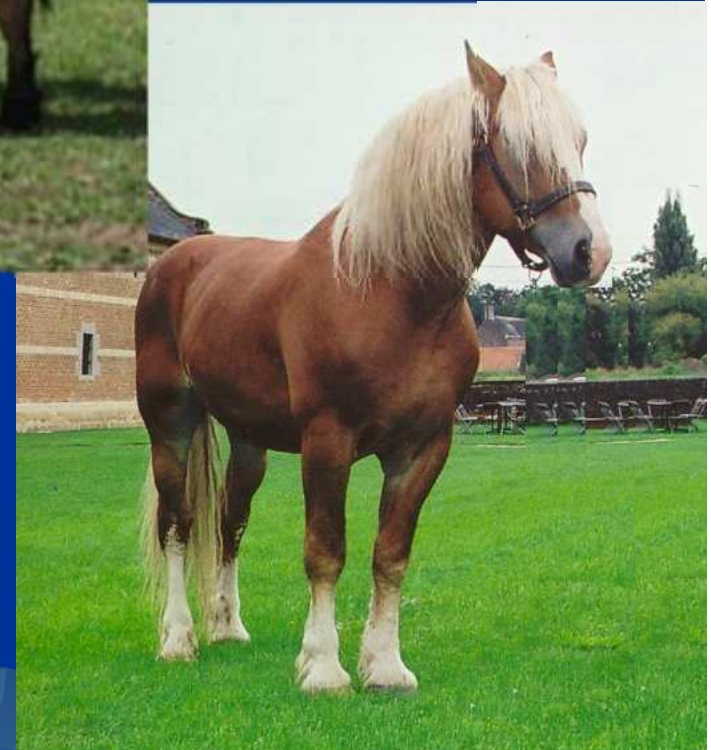


# Belgian draught horses

Belgisch  
Trekpaard ↓



Vlaams  
Paard ↓



Ardens  
Trekpaard ↑

zw

[www.sle.be](http://www.sle.be)





# Old Belgian cattle breeds



Rode rund West-Vlaanderen



Wit-rode rund  
Oost-Vlaanderen



Belgisch Wit-blauw (dd)



Kempens rund





# Old Belgian sheep breeds



Belgisch Melkschaap



Ardense Voskop



Vlaams schaap



Kempens schaap



Entre-Sambre-et-Meuse





# Kempense goat en Vlaamse goat



Kempense geit

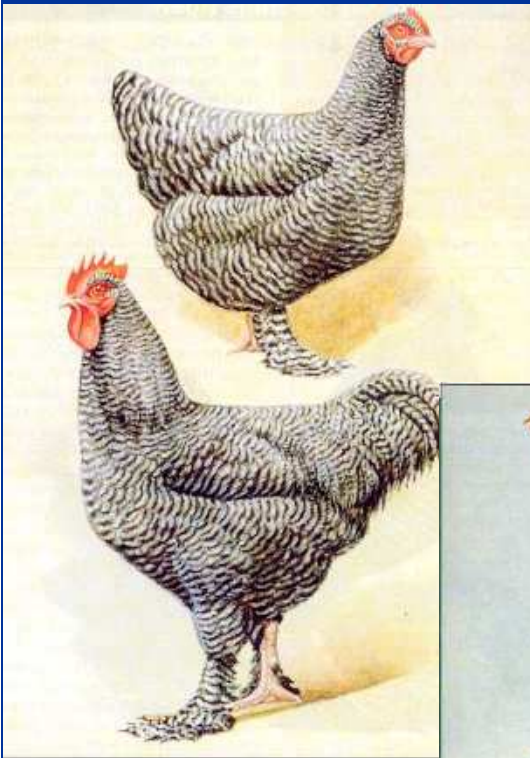


Vlaamse geit

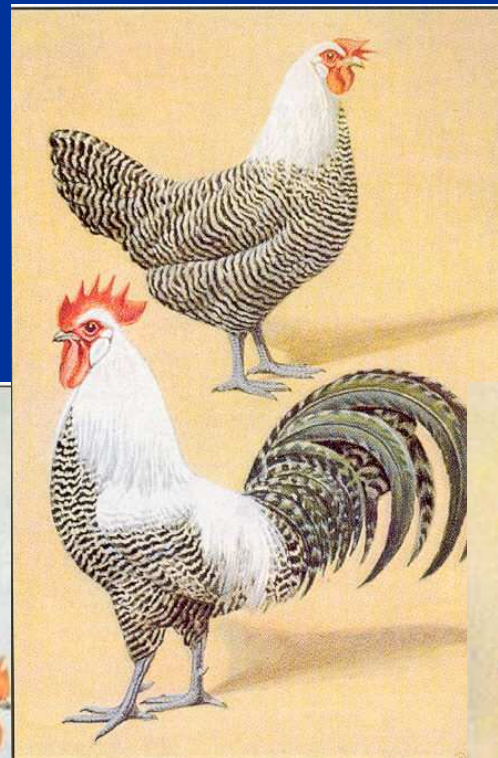




# Some old Belgian poultry breeds



Brabants  
hoen ↓



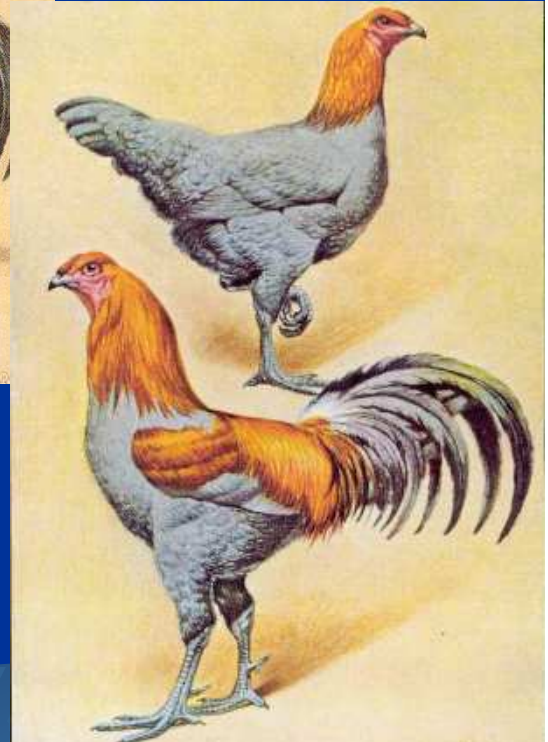
Brugse  
vechter ↓



Mechels  
hoen ↑



Brakel  
hoen ↑







# Publications by SLE

